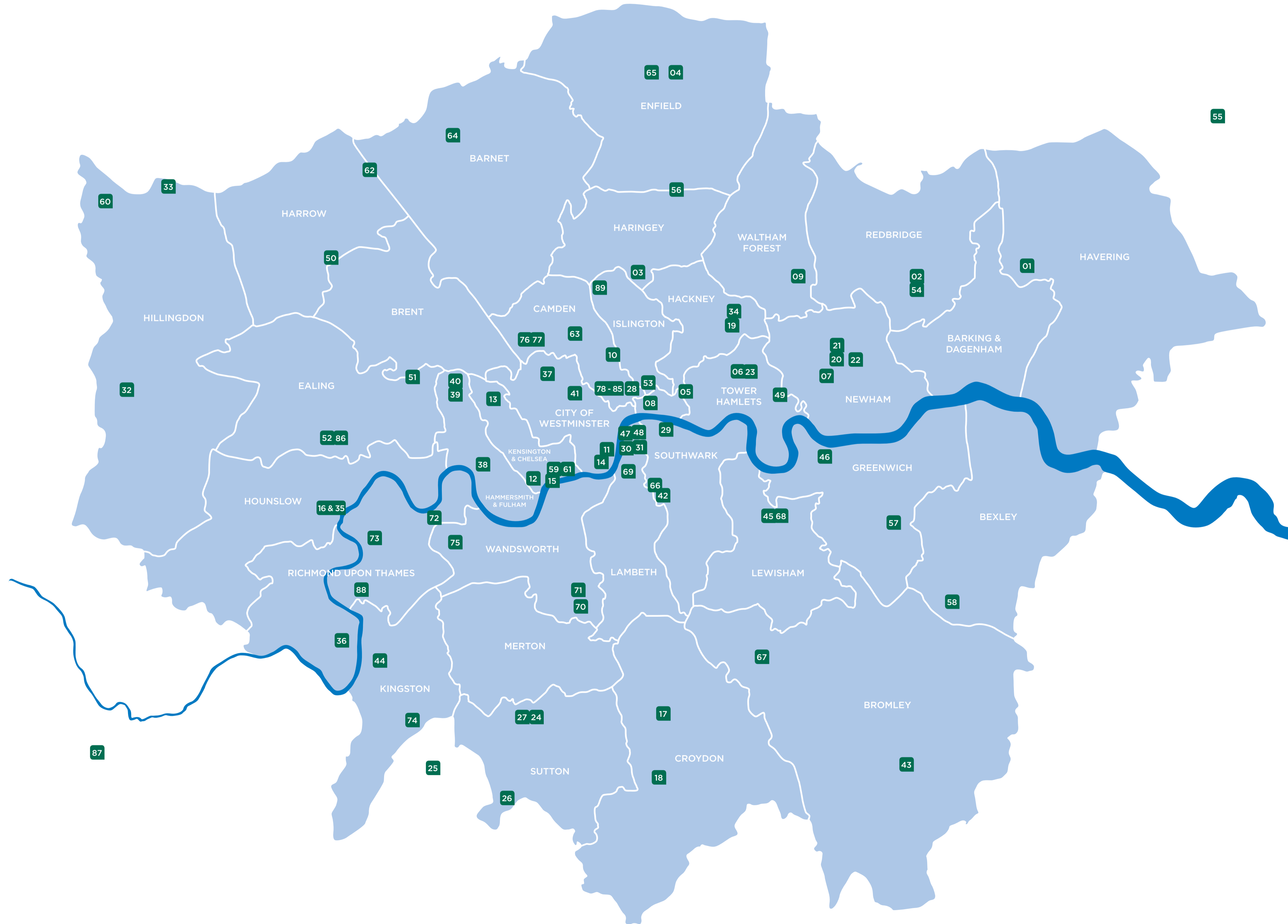




LONDON'S NHS: 2015/16

London Communications Agency has produced this updated map of NHS trusts and hospitals in London, as of November 2015. It includes the name, address and telephone number of each NHS trust in London, the main NHS hospitals and other locations.



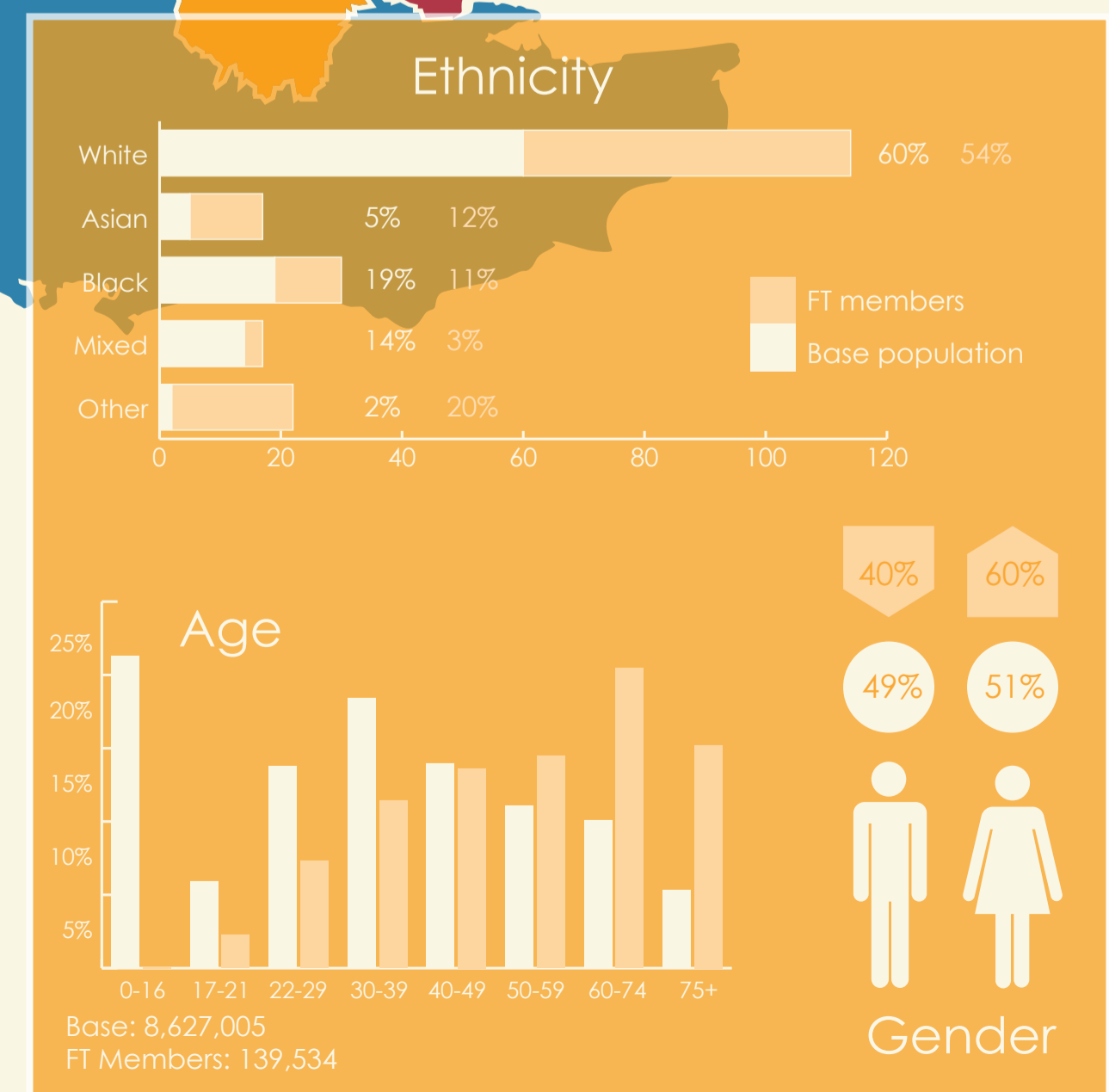
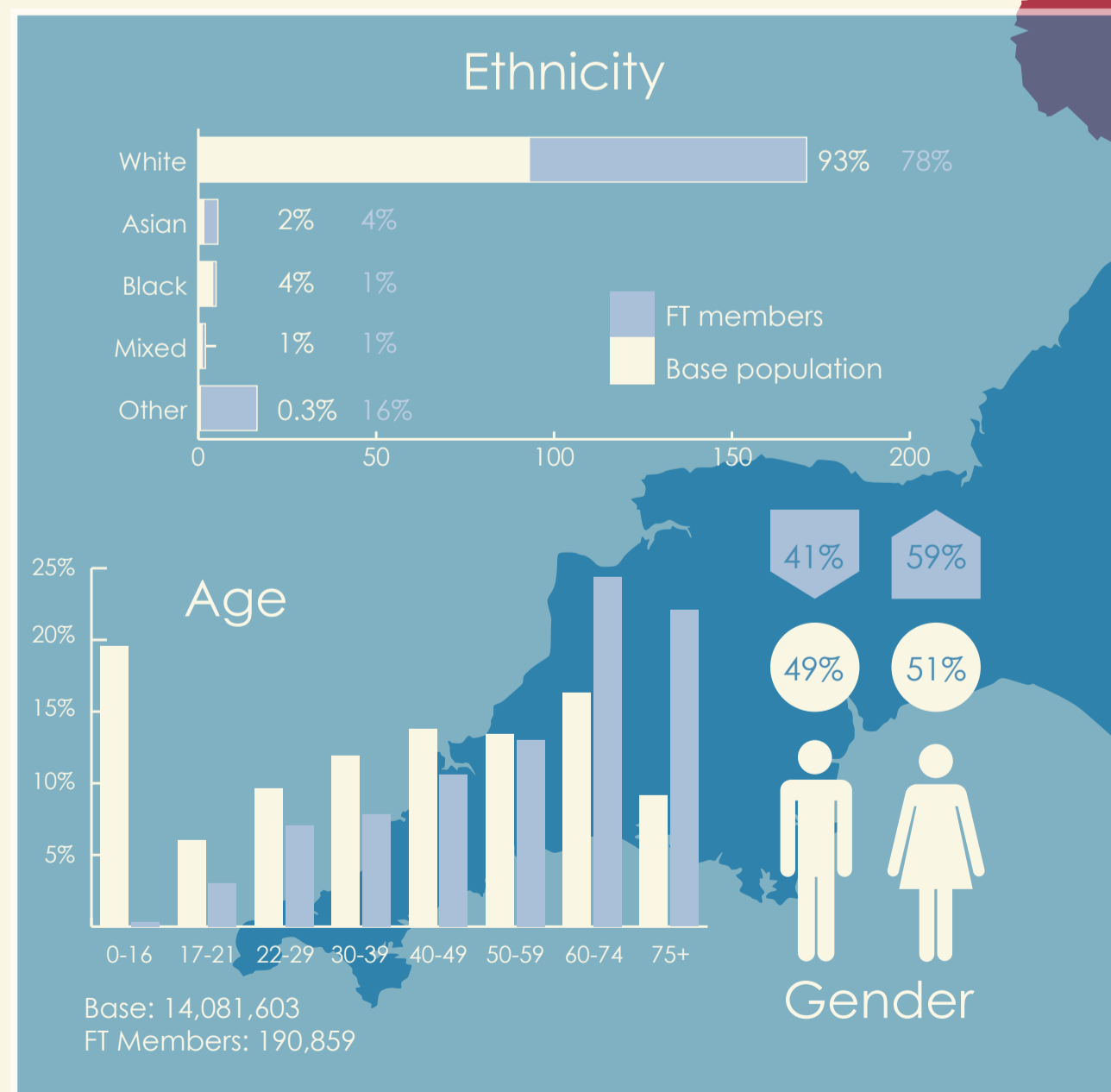
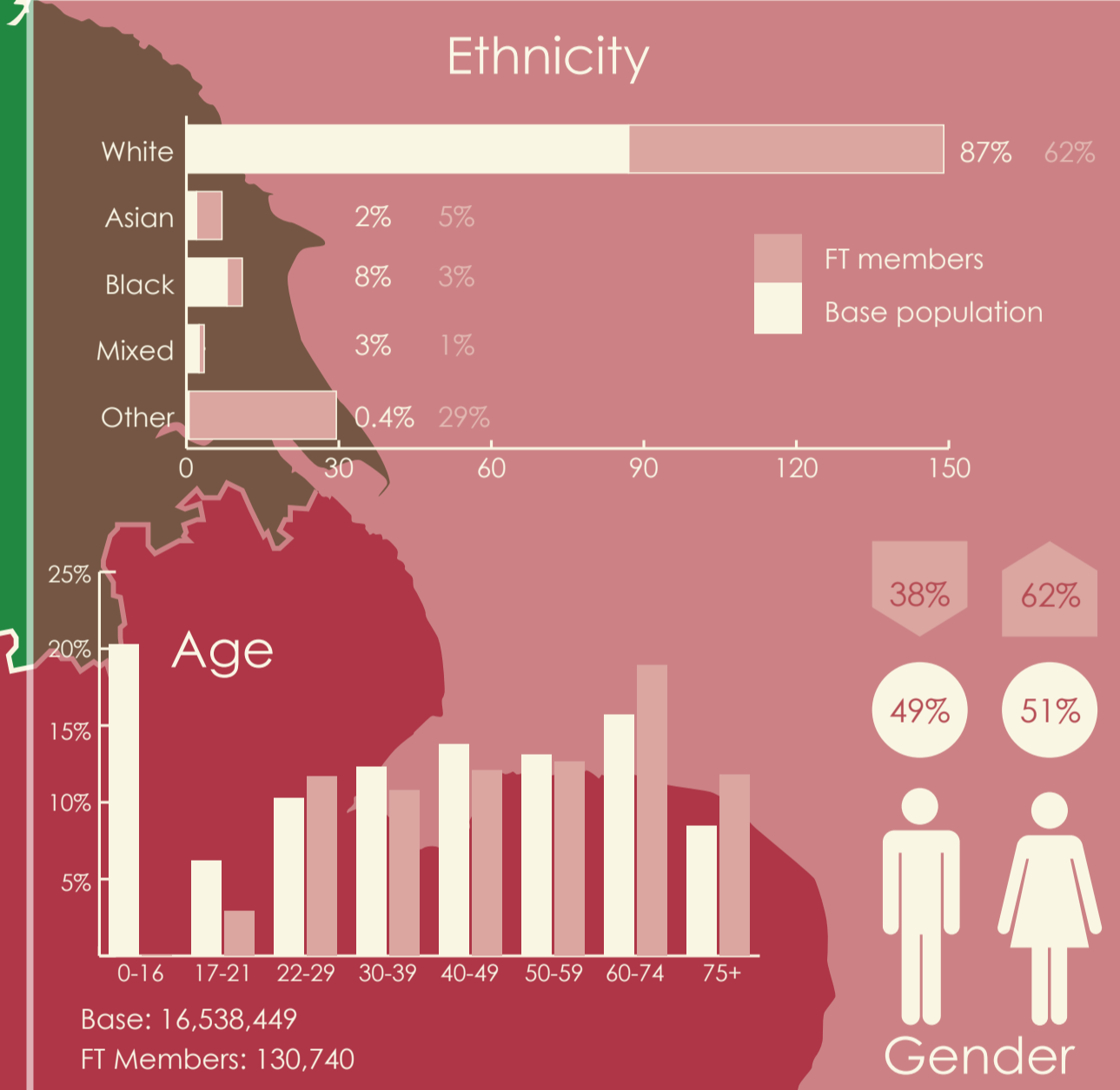
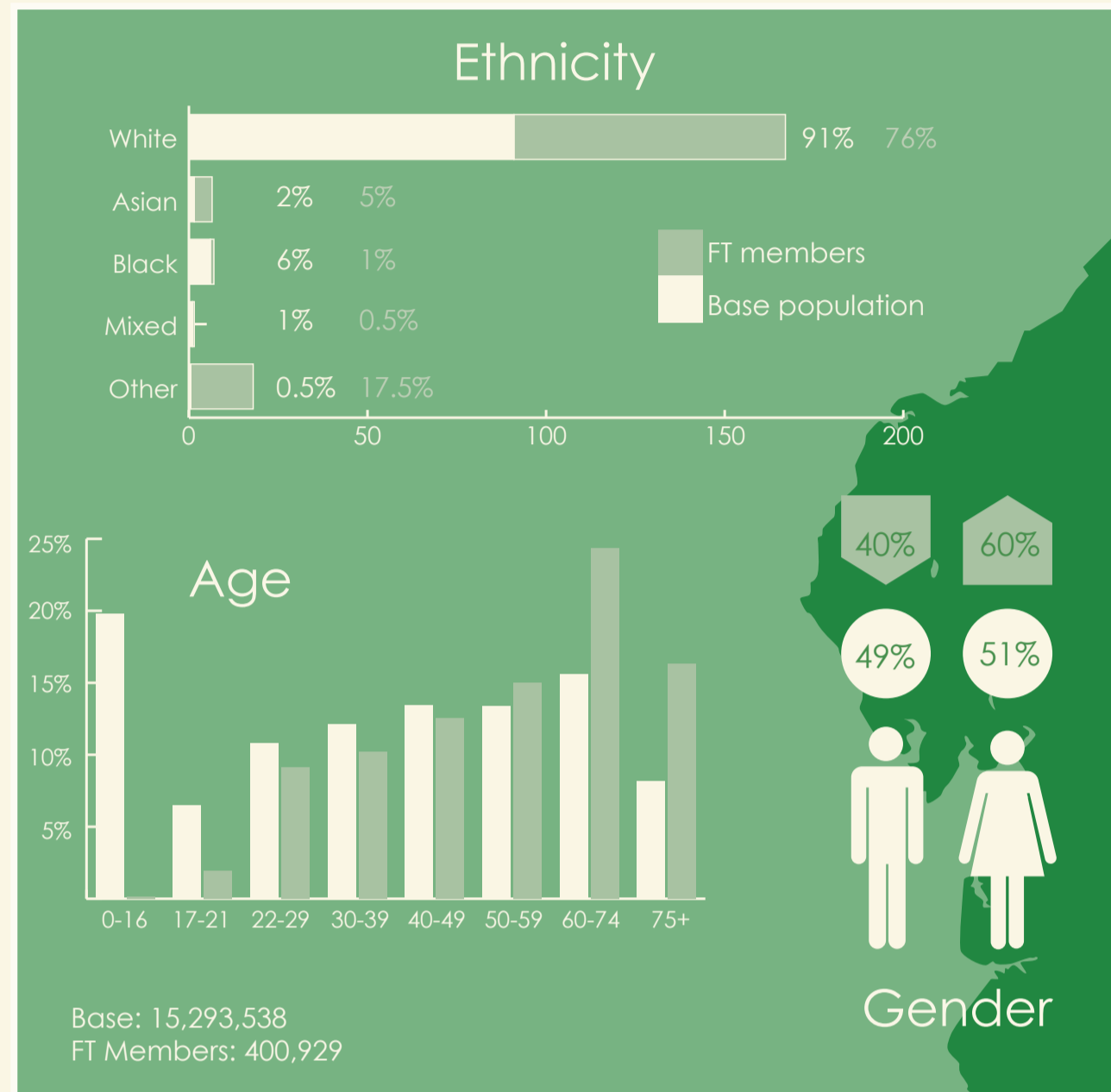
TRUST | SITES

TRUST	No.	SITES
Barking, Havering and Redbridge University Hospitals NHS Trust Rem Valley Way, Romford, Essex, RM7 0AG 01708 435000	01	Queen's Hospital (HQ)
	02	King George Hospital
Barnet, Enfield and Haringey Mental Health NHS Trust Block B2, St Ann's Hospital, St Ann's Road, London, N15 3TH 020 8702 3000	03	St Ann's Hospital (HQ)
	04	St Michael's
Barts Health NHS Trust Ground Floor, Pathology and Pharmacy Building, The Royal London Hospital, 80 Newark Street, London, E1 2ES 020 3416 5000	05	The Royal London Hospital (HQ)
	06	Mill End Hospital
	07	Newham University Hospital
	08	St Bartholomew's Hospital
	09	Whipps Cross University Hospital
Camden and Islington NHS Foundation Trust 4th Floor, East Wing, St Pancras Hospital, 4 St Pancras Way, London, NW1 0PF 020 3317 3500	10	St Pancras Hospital (HQ)
Central London Community Healthcare NHS Trust 7th Floor, 64 Victoria Street, London, SW1E 6QP 020 7798 1300	11	Central London Community Healthcare (HQ)
Central and North West London NHS Foundation Trust Trust HQ, Stephenson House, 75 Hampstead Road, London, NW1 2PL 020 3214 5700	12	South Kensington and Chelsea Mental Health Centre
	13	St Charles Hospital
	14	The Gordon Hospital
Chelsea and Westminster Hospital NHS Foundation Trust 369 Fulham Road, London, SW10 9NH 020 3315 8000	15	Chelsea and Westminster Hospital (HQ)
	16	West Middlesex University Hospital
Croydon Health Services NHS Trust 530 London Road, Croydon, Surrey, CR7 7YE 020 8401 3000	17	Croydon University Hospital (HQ)
	18	Purley War Memorial Hospital
East London NHS Foundation Trust Trust HQ, 9 Aile Street, London, E1 8DE 020 7655 4000	19	City and Hackney Centre for Mental Health
	20	Coborn Centre for Adolescent Mental Health
	21	East Ham Care Centre
	22	Newham Centre for Mental Health
	23	Tower Hamlets Centre For Mental Health
Epsom and St Helier University Hospitals NHS Trust St Helier Hospital, Wrythe Lane, Caxshall, Surrey, SM5 1AA 020 8296 2000	24	St Helier Hospital (HQ)
	25	Epsom Hospital
	26	Sutton Hospital
	27	Queen Mary's Hospital for Children
Great Ormond Street Hospital for Children NHS Foundation Trust Great Ormond Street, London, WC1N 3JH 020 7405 9200	28	Great Ormond Street Hospital (HQ)
Guy's and St Thomas' NHS Foundation Trust Trust Offices, Guy's Hospital, Great Maze Road, London, SE1 9RT 020 7188 7188	29	Guy's Hospital (HQ)
	30	Evelina London Children's Hospital
	31	St Thomas' Hospital
Hillingdon Hospitals NHS Foundation Trust Field Heath Road, Uxbridge, Middlesex, UB8 3NN 01895 238282	32	The Hillingdon Hospital (HQ)
	33	Mount Vernon Hospital
Homerton University Hospital NHS Foundation Trust Homerton Row, London, E9 6SR 020 8510 6555	34	Homerton University Hospital (HQ)
Hounslow and Richmond Community Healthcare NHS Trust Thames House, 180 High Street, Teddington, Middlesex, TW11 8HU 020 8973 3000	35	Hounslow Urgent Care Centre (HQ)
	36	Teddington Memorial Hospital
Imperial College Healthcare NHS Trust The Rays, South Wharf Road, St Mary's Hospital, London, W2 1NY 020 3312 6666	37	St Mary's Hospital (HQ)
	38	Charing Cross Hospital
	39	Hammersmith Hospital
	40	Queen Charlotte's and Chelsea Hospital
	41	Western Eye Hospital
King's College Hospital NHS Foundation Trust Denmark Hill, London, SE5 9RS 020 3299 9000	42	King's College Hospital (HQ)
	43	Princess Royal University Hospital
Kingston Hospital NHS Foundation Trust Galsworthy Road, Kingston Hospital, Kingston Upon Thames, Surrey, KT2 7QB 020 8546 7711	44	Kingston Hospital (HQ)
Lewisham and Greenwich NHS Trust University Hospital Lewisham, Lewisham High Street, London, SE13 6LH 020 8333 3000	45	University Hospital Lewisham (HQ)
	46	Queen Elizabeth Hospital
London Ambulance Service NHS Trust 220 Waterloo Road, London, SE1 8SD 020 7783 2000	47	Waterloo Road (HQ)
	48	Pocock Street (HQ)
	49	Bow (HQ)
London North West Healthcare NHS Trust Northwick Park Hospital, Watford Road, Harrow, Middlesex, HA1 3UJ 020 8864 3232	50	Northwick Park and St Mark's Hospitals (HQ)
	51	Central Middlesex Hospital
	52	Ealing Hospital
Moorfields Eye Hospital NHS Foundation Trust 162 City Road, London, EC1V 2PD 020 7253 3411	53	Moorfields Eye Hospital (HQ)
North East London NHS Foundation Trust Goodmayes Hospital, 157 Banley Lane, Ilford, Essex, IG3 8XJ 0300 555 1200	54	Goodmayes Hospital (HQ)
	55	Brentwood Community Hospital
North Middlesex University Hospital NHS Trust Staring Way, London, N18 1GQ 020 8887 2000	56	North Middlesex Hospital (HQ)
Oxleas NHS Foundation Trust Trust HQ, Pinewood House, Pinewood Place, Dartford, Kent, DA2 7WG 01322 625700	57	Memorial Hospital
	58	Queen Mary's Hospital, Sidcup
Royal Brompton and Harefield NHS Foundation Trust Sydney Street, London, SW3 6NP 020 7352 8121	59	Royal Brompton Hospital (HQ)
	60	Harefield Hospital
Royal Marsden NHS Foundation Trust Fulham Road, London, SW3 6JJ 020 7352 8171	61	The Royal Marsden (HQ)
Royal National Orthopaedic Hospital NHS Trust Brockley Hill, Starmore, Middlesex, HA7 4LP 020 8954 2300	62	Royal National Orthopaedic Hospital (HQ)
Royal Free London NHS Foundation Trust Pond Street, London, NW3 2QG 020 7794 0500	63	Royal Free Hospital (HQ)
	64	Barnet Hospital
	65	Chase Farm Hospital
South London and Maudsley NHS Foundation Trust Maudsley Hospital, Denmark Hill, London, SE5 8AZ 020 3228 6000	66	Maudsley Hospital (HQ)
	67	Bethlem Royal Hospital
	68	The Ladywell Unit, Lewisham Hospital
	69	The Lambeth Hospital
	70	St George's Hospital (HQ)
St George's Healthcare NHS Trust Blackshaw Road, London, SW17 0BT 020 8472 1295	71	Springfield University Hospital (HQ)
	72	Barnes Hospital
	73	Richmond Royal Hospital
	74	Tolworth Hospital
	75	Queen Mary's Hospital, Roehampton
Tavistock and Portman NHS Foundation Trust 120 Belgrave Lane, London, NW3 5BA 020 7435 7111	76	Tavistock Centre (HQ)
	77	Portman Clinic
University College London Hospitals NHS Foundation Trust 250 Euston Road, London, NW1 2PG 020 3456 7890	78	University College Hospital (HQ)
	79	Eastman Dental Hospital
	80	Hospital for Tropical Diseases
	81	National Hospital for Neurology and Neurosurgery
	82	Royal London Hospital for Integrated Medicine
	83	University College Hospital at Westmoreland Street
	84	University College Hospital Macmillan Cancer Centre
	85	Royal National Throat, Nose and Ear Hospital
West London Mental Health NHS Trust Regional Secure Unit, St Bernard's Hospital, Uxbridge Road, Southall, Middlesex, UB1 3EU 020 8354 8354	86	St Bernard's Hospital (HQ)
	87	Broadmoor Hospital
	88	Cassel Hospital
Whittington Hospital NHS Trust The Whittington Hospital, Magdala Avenue, London, N19 5NF 020 7272 3070	89	The Whittington Hospital (HQ)

The Engagement Experts

Providing award winning communications for the NHS

Trust Type Key
 □ Acute
 ○ Mental Health
 △ Ambulance
 ⊕ Community Health and Care
Bold indicates MES work with or have worked with this trust
 N.B. Non-MES Engage Client membership figures based on most recent Monitor report, MES Engage clients based on membership number as of November 2015



LOCAL ACCOUNTABILITY IN HEALTH: 2015/16

NHS Foundation Trusts first came into being in 2004. A cornerstone of their governance is a strong, representative and involved membership. This requires effective, targeted communications and a commitment to meaningful dialogue, underpinned by robust demographic analysis.

Foundation Trust	#Public/Patient Members	Type
5 Boroughs Partnership NHS Foundation Trust	5,800	○
Aintree University Hospital NHS Foundation Trust	8,200	□
Airedale NHS Foundation Trust	11,300	□
Alder Hey Children's NHS Foundation Trust	10,500	□
Barnsley Hospital NHS Foundation Trust	8,800	□
Blackpool Teaching Hospitals NHS Foundation Trust	5,400	□
Bolton NHS Foundation Trust	4,400	□
Bradford District Care NHS Foundation Trust	9,500	○
Bradford Teaching Hospitals NHS Foundation Trust	43,900	□
Bridgewater Community Healthcare NHS Foundation Trust	9,800	⊕
Calderdale and Huddersfield NHS Foundation Trust	9,700	□
Calderstones Partnership NHS Foundation Trust	4,100	○
Central Manchester University Hospitals NHS Foundation Trust	14,200	○
Cheshire and Wirral Partnership NHS Foundation Trust	11,200	○
Chesterfield Royal Hospital NHS Foundation Trust	15,700	□
City Hospitals Sunderland NHS Foundation Trust	11,000	□
Countess of Chester Hospital NHS Foundation Trust	7,300	□
County Durham and Darlington NHS Foundation Trust	11,000	□
Cumbria Partnership NHS Foundation Trust	12,900	⊕
Doncaster and Bassetlaw Hospitals NHS Foundation Trust	10,100	□
Gateshead Health NHS Foundation Trust	12,900	□
Greater Manchester West Mental Health NHS Foundation Trust	5,100	○
Harrogate and District NHS Foundation Trust	14,000	□
Humber NHS Foundation Trust	13,200	○
Lancashire Care NHS Foundation Trust	8,100	⊕
Lancashire Teaching Hospitals NHS Foundation Trust	13,400	□
Leeds and York Partnership NHS Foundation Trust	14,000	○
Liverpool Heart and Chest Hospital NHS Foundation Trust	10,300	□
Liverpool Women's NHS Foundation Trust	9,800	□
Mid Cheshire Hospitals NHS Foundation Trust	5,300	□
North East Ambulance Service NHS Foundation Trust	9,800	△
North Tees and Hartlepool NHS Foundation Trust	6,200	□
Northumberland, Tyne and Wear NHS Foundation Trust	11,900	□
Northumbria Healthcare NHS Foundation Trust	62,100	□
Pennine Care NHS Foundation Trust	12,200	⊕
Rotherham, Doncaster and South Humber NHS Foundation Trust	6,700	□
Salford Royal NHS Foundation Trust	15,200	□
Sheffield Children's NHS Foundation Trust	7,900	□
Sheffield Health and Social Care NHS Foundation Trust	12,600	○
Sheffield Teaching Hospitals NHS Foundation Trust	12,400	□
South Tees Hospitals NHS Foundation Trust	5,200	□
South Tyneside NHS Foundation Trust	5,600	□
South West Yorkshire Partnership NHS Foundation Trust	11,000	○
Stockport NHS Foundation Trust	12,100	□
Tameside Hospital NHS Foundation Trust	25,400	□
Tees, Esk and Wear Valleys NHS Foundation Trust	7,900	○
The Christie NHS Foundation Trust	30,200	□
The Clatterbridge Cancer Centre NHS Foundation Trust	5,100	□
The Newcastle Upon Tyne Hospitals NHS Foundation Trust	6,200	□
The Rotherham NHS Foundation Trust	13,100	□
The Walton Centre NHS Foundation Trust	6,600	□
University Hospital of South Manchester NHS Foundation Trust	7,700	□
University Hospitals of Morecambe Bay NHS Foundation Trust	6,300	□
Warrington and Halton Hospitals NHS Foundation Trust	12,000	□
Wirral University Teaching Hospital NHS Foundation Trust	9,100	□
Wrightington, Wigan and Leigh NHS Foundation Trust	8,800	□
York Teaching Hospital NHS Foundation Trust	11,600	□

The North of England

Foundation Trust	#Public/Patient Members	Type
Basildon and Thurrock University Hospitals NHS Foundation Trust	13,100	□
Birmingham and Solihull Mental Health NHS Foundation Trust	8,600	○
Birmingham Children's Hospital NHS Foundation Trust	7,200	□
Birmingham Women's NHS Foundation Trust	4,400	○
Black Country Partnership NHS Foundation Trust	6,300	○
Burton Hospitals NHS Foundation Trust	6,800	□
Cambridge University Hospitals NHS Foundation Trust	11,000	□
Cambridgeshire and Peterborough NHS Foundation Trust	10,000	○
Colchester Hospital University NHS Foundation Trust	6,400	□
Derby Teaching Hospitals NHS Foundation Trust	10,200	□
Derbyshire Community Health Services NHS Foundation Trust	12,500	⊕
Derbyshire Healthcare NHS Foundation Trust	6,200	○
Heart of England NHS Foundation Trust	92,700	□
Hertfordshire Partnership University NHS Foundation Trust	10,700	□
James Paget University Hospitals NHS Foundation Trust	9,100	□
Kettering General Hospital NHS Foundation Trust	4,900	□
Lincolnshire Partnership NHS Foundation Trust	7,700	○
Luton and Dunstable University Hospital NHS Foundation Trust	11,600	□
Milton Keynes University Hospital NHS Foundation Trust	5,900	□
Norfolk and Norwich University Hospitals NHS Foundation Trust	16,700	□
Norfolk and Suffolk NHS Foundation Trust	13,000	□
North Essex Partnership NHS Foundation Trust	5,800	○
Northamptonshire Healthcare NHS Foundation Trust	9,900	□
Northern Lincolnshire and Goole Hospitals NHS Foundation Trust	5,300	□
Nottinghamshire Healthcare NHS Foundation Trust	9,700	○
Papworth Hospital NHS Foundation Trust	9,100	□
Peterborough and Stamford Hospitals NHS Foundation Trust	5,200	□
Sherwood Forest Hospitals NHS Foundation Trust	19,500	□
South Essex Partnership University NHS Foundation Trust	14,600	□
South Staffordshire and Shropshire Healthcare NHS Foundation Trust	11,300	□
South Warwickshire NHS Foundation Trust	6,100	□
Southend University Hospital NHS Foundation Trust	16,000	□
The Dudley Group NHS Foundation Trust	13,900	□
The Queen Elizabeth Hospital King's Lynn NHS Foundation Trust	7,300	□
The Robert Jones and Agnes Hunt Orthopaedic Hospital NHS Foundation Trust	4,400	□
The Royal Orthopaedic Hospital NHS Foundation Trust	5,500	□
University Hospitals Birmingham NHS Foundation Trust	15,400	□
West Midlands Ambulance Service NHS Foundation Trust	9,400	△
West Suffolk NHS Foundation Trust	5,500	□

Midlands and the East of England

Foundation Trust	#Public/Patient Members	Type
Camden and Islington NHS Foundation Trust	5,100	○
Central and North West London NHS Foundation Trust	9,100	○
Chelsea and Westminster NHS Foundation Trust	13,100	□
East London NHS Foundation Trust	9,800	□
Great Ormond Street Hospital for Children NHS Foundation Trust	8,800	□
Guy's and St Thomas' Hospital NHS Foundation Trust	9,900	□
Homerton University Hospital NHS Foundation Trust	5,200	□
King's College Hospital NHS Foundation Trust	11,100	□
Kingston Hospital NHS Foundation Trust	6,700	□
Moorfields Eye Hospital NHS Foundation Trust	19,200	□
North East London NHS Foundation Trust	10,200	○
Oxleas NHS Foundation Trust	5,200	□
Royal Brompton & Harefield NHS Foundation Trust	7,400	□
Royal Free London NHS Foundation Trust	14,100	□
South London and Maudsley NHS Foundation Trust	8,700	○
St George's University Hospitals NHS Foundation Trust	12,300	□
The Hillingdon Hospitals NHS Foundation Trust	7,100	□
The Royal Marsden NHS Foundation Trust	5,000	□
The Tavistock and Portman NHS Foundation Trust	6,700	□
University College London Hospitals NHS Foundation Trust	11,600	□

London

Foundation Trust	#Public/Patient Members	Type
2gether NHS Foundation Trust	5,000	○
Ashford and St Peter's NHS Foundation Trust	7,500	□
Berkshire Healthcare NHS Foundation Trust	6,400	□
Cornwall Partnership NHS Foundation Trust	8,900	□
Dorset County Hospital NHS Foundation Trust	3,000	□
Dorset HealthCare University NHS Foundation Trust	4,500	⊕
East Kent Hospitals University NHS Foundation Trust	11,400	□
Frimley Health NHS Foundation Trust	15,900	□
Gloucestershire Hospitals NHS Foundation Trust	11,700	□
Great Western Hospitals NHS Foundation Trust	6,200	□
Hampshire Hospitals NHS Foundation Trust	10,600	□
Kent Community Health NHS Foundation Trust	11,700	⊕
Medway NHS Foundation Trust	10,900	□
Oxford Health NHS Foundation Trust	2,800	□
Oxford University Hospitals NHS Foundation Trust	8,400	□
Poole Hospital NHS Foundation Trust	6,400	□
Queen Victoria Hospital NHS Foundation Trust	8,600	□
Royal Berkshire NHS Foundation Trust	17,700	□
Royal Bournemouth and Christchurch Hospitals NHS Foundation Trust	11,200	□
Royal Devon and Exeter NHS Foundation Trust	11,500	□
Royal Surrey County Hospital NHS Foundation Trust	8,800	□
Royal United Hospitals Bath NHS Foundation Trust	9,700	□
Salisbury NHS Foundation Trust	13,900	□
Somerset Partnership NHS Foundation Trust	6,400	□
South Central Ambulance Service NHS Foundation Trust	13,300	△
South East Coast Ambulance Service NHS Foundation Trust	9,300	△
South Western Ambulance Service NHS Foundation Trust	14,300	△
Southern Health NHS Foundation Trust	9,700	□
Surrey and Borders Partnership NHS Foundation Trust	5,800	○
Sussex Partnership NHS Foundation Trust	10,400	○
Taunton and Somerset NHS Foundation Trust	11,200	□
Torbay and South Devon NHS Foundation Trust	12,100	□
University Hospital Southampton NHS Foundation Trust	9,700	□
University Hospitals Bristol NHS Foundation Trust	11,100	□
Western Sussex Hospitals NHS Foundation Trust	7,600	□
Yeovil District Hospital NHS Foundation Trust	8,200	□

The South of England

N.B. Membership figures in graphs are based on MES Engage FT clients only (80 in total as of October 2015)